

---

# Whitehaven Coal Limited

VICKERY EXTENSION PROJECT – CCC MEETING  
11 APRIL 2016



WHITEHAVEN COAL

# Agenda



Topic
Introduction
Project description
Environmental assessment update
Community consultation
General business
Date and agenda for next meeting

# Introduction



- Present and apologies.
- Declaration of pecuniary or other interests.
- Previous minutes.

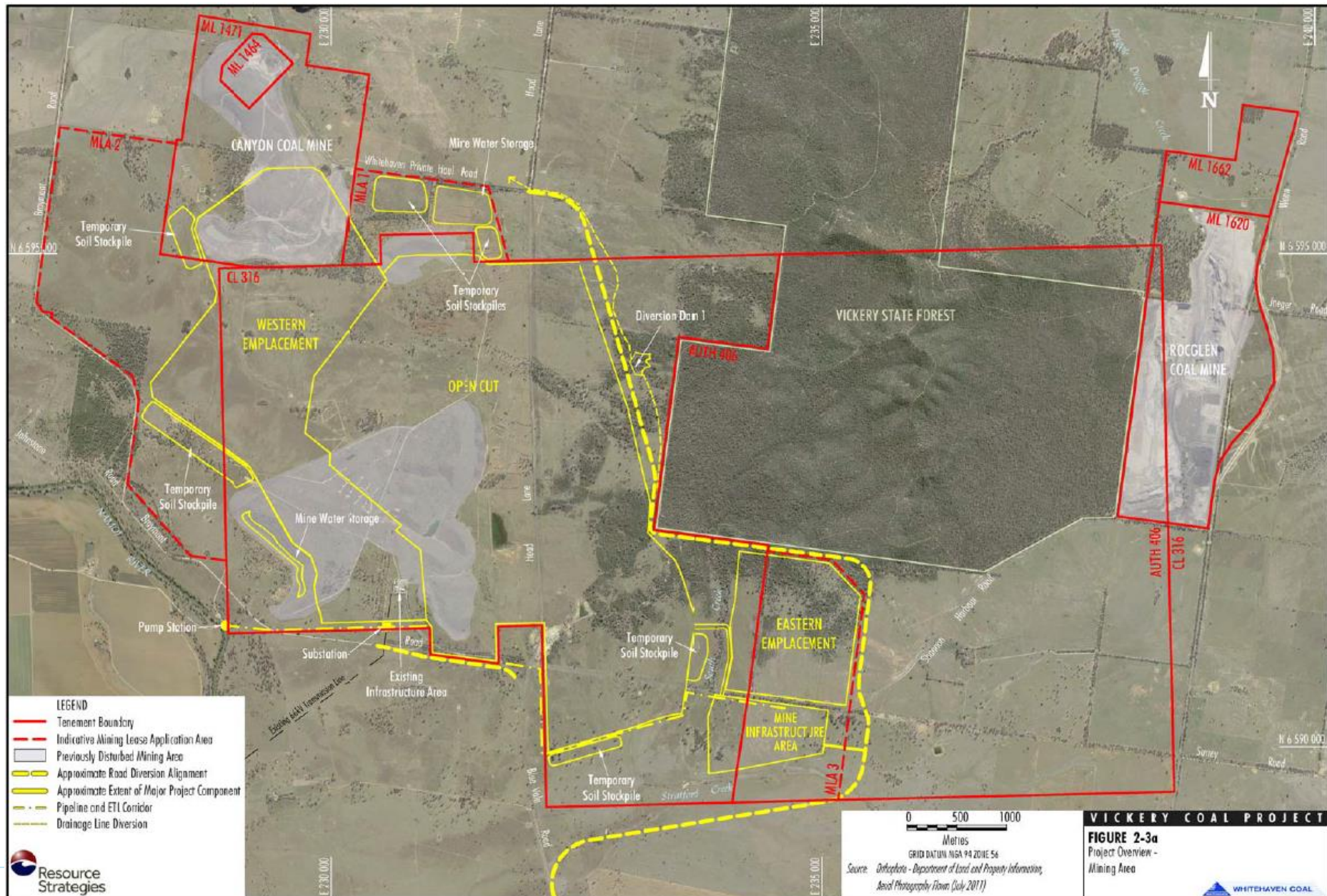
# Project Description



- Vickery Coal Project (Approved Mine) approved by DP&E 19 September 2014.
- Vickery Extension Project:
  - Increase in ROM extraction rate from 4.5 Mtpa to 10 Mtpa.
  - Increase in open cut mining footprint (including mining of Vickery South).
  - Construction and operation of an on-site CHPP, rail load-out facility and rail spur.
  - Processing of Vickery, Tarrawonga and Rocglen coal.
  - 25 year mine life.
  - ROM transport by road during Year 1 (during construction of Project infrastructure) in accordance with existing consent limits.

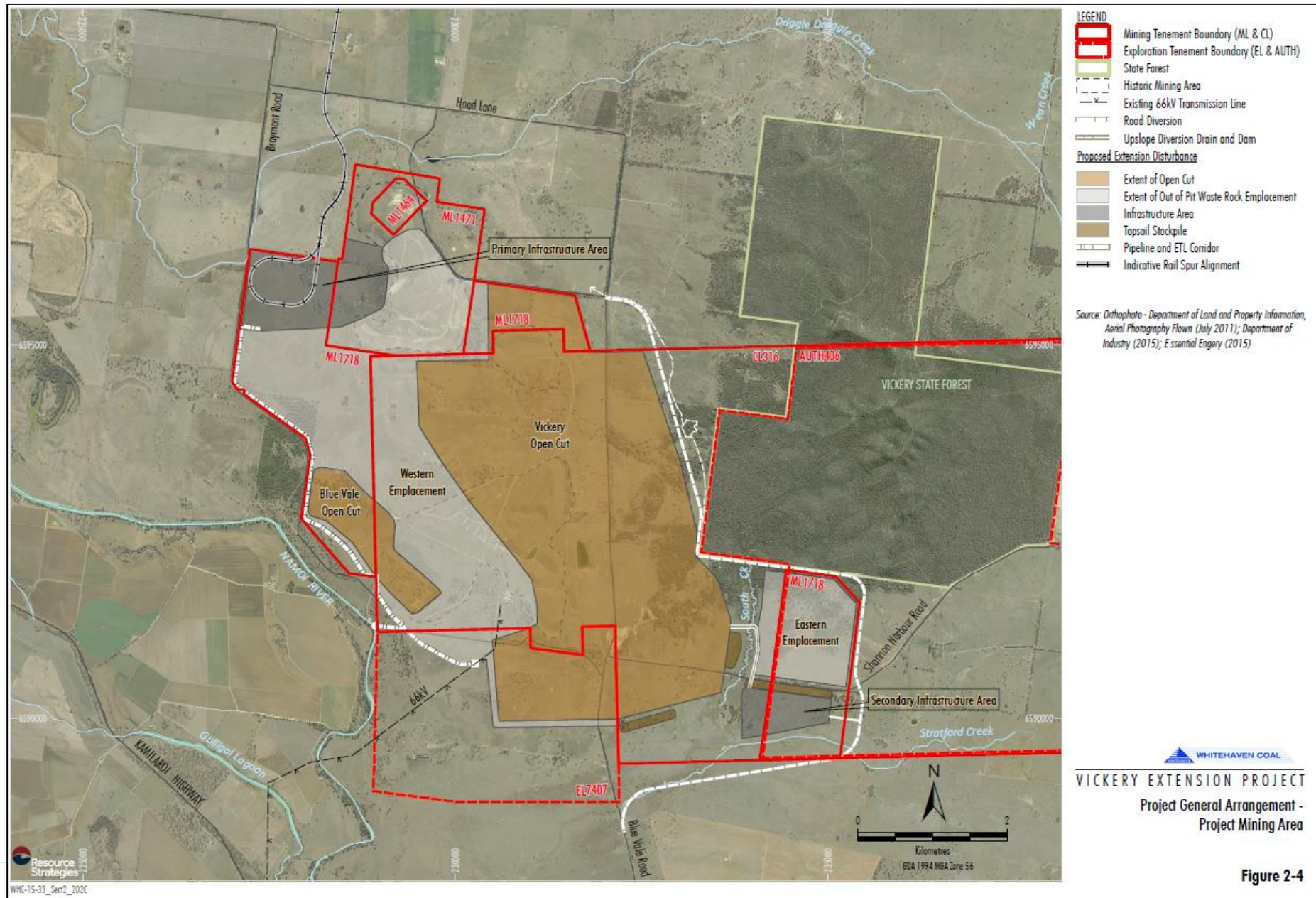


# Project Description - Approved Mine



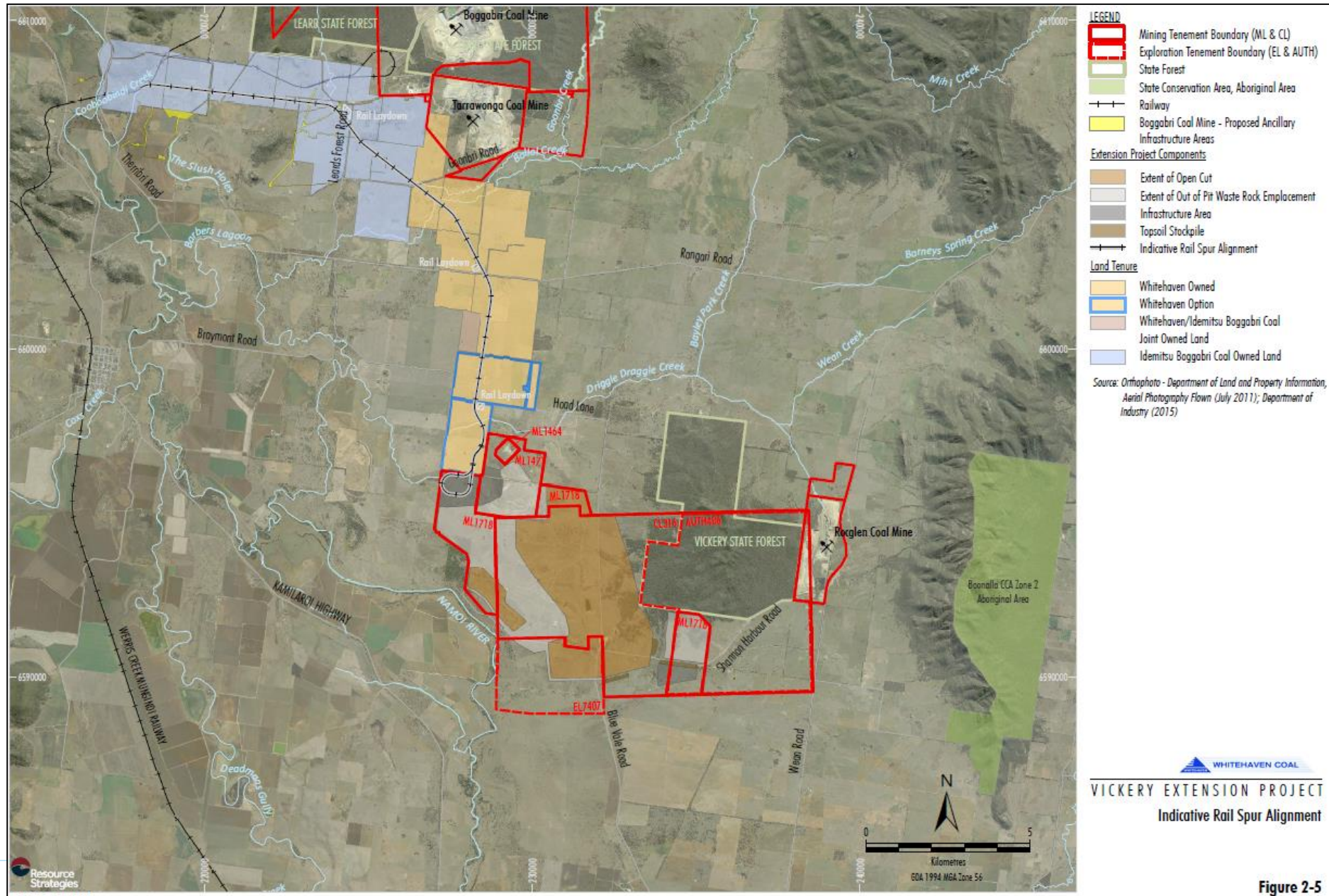


# Project Description - Extension Project





# Project Description - Rail



# Operational Workforce



- Operational workforce of approximately 450 full time equivalent personnel (increase of approximately 200 personnel from the Approved Mine).
- In keeping with Whitehaven's local employment policies it is anticipated that approximately will be 70% local hires distributed across:
  - Gunnedah
  - Boggabri
  - Narrabri
  - Manilla



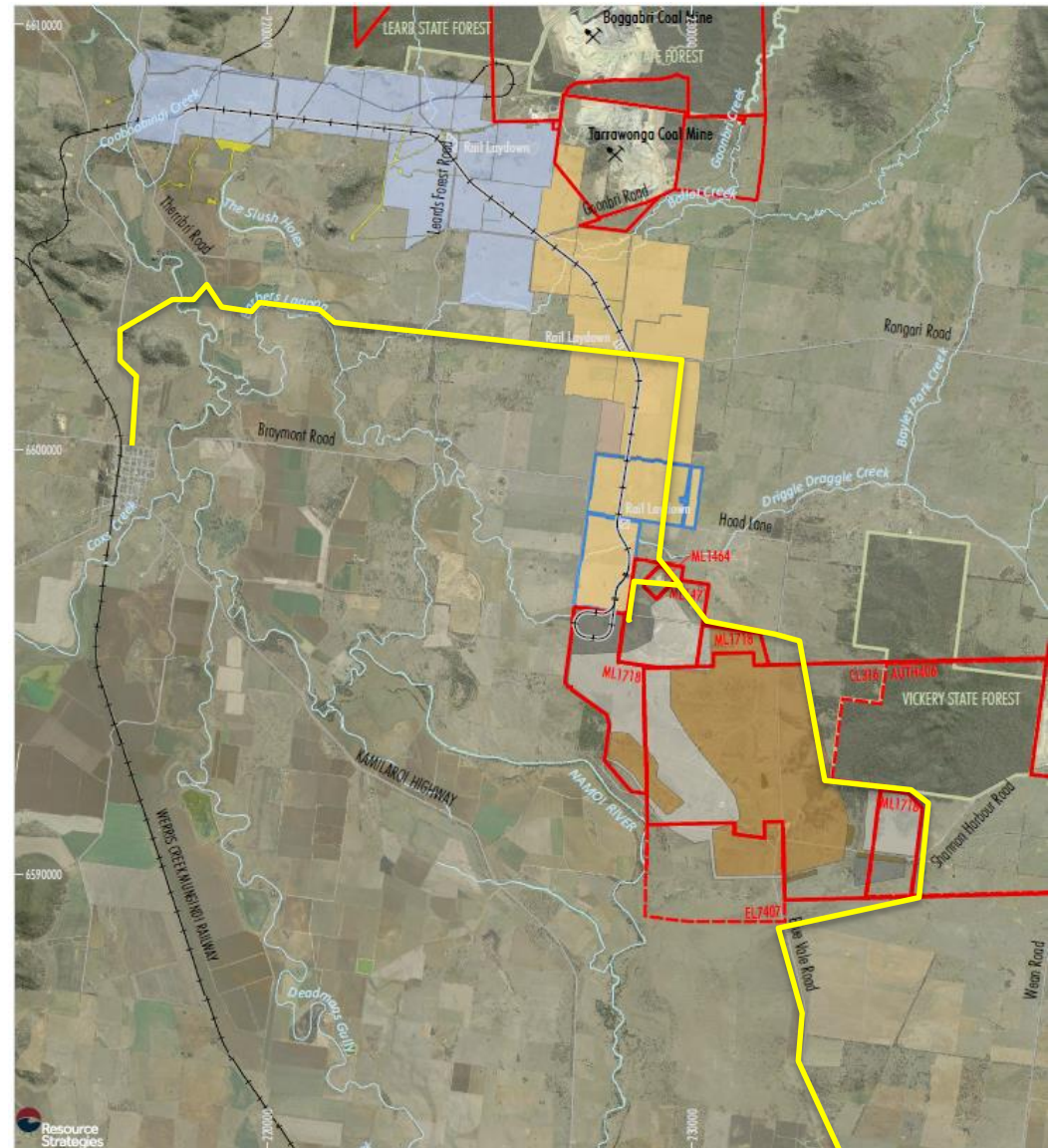
# Construction Workforce



- Construction workforce of approximately 500 full time equivalent personnel.
- Assumed to be non-local hires for purpose of impact assessment.
- Estimate that 90% of construction workforce would reside in the Boggabri accommodation camp.

# Employee Vehicle Movements

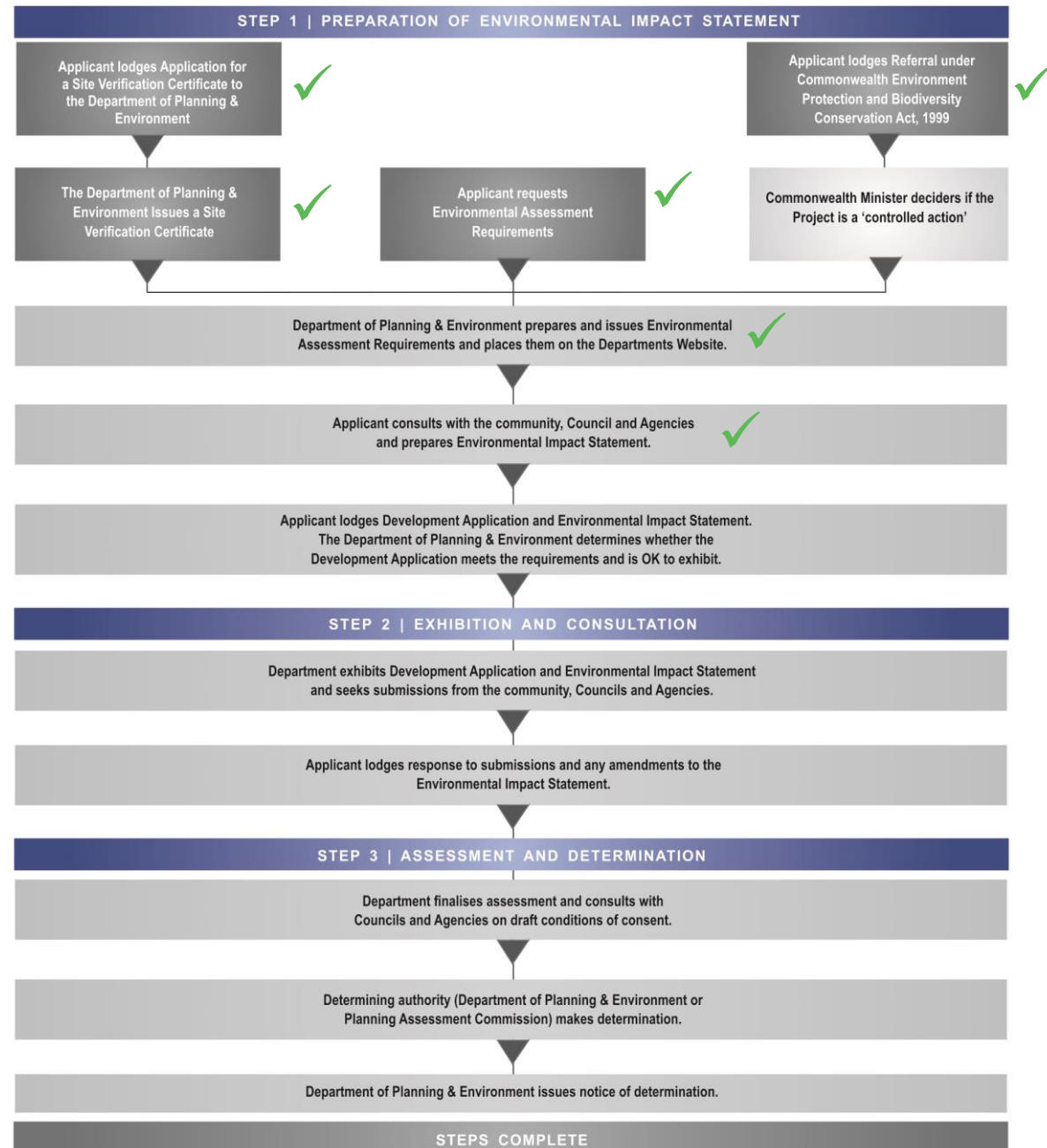
- Access to site via existing sealed roads from Gunnedah and Boggabri:
  - Blue Vale Road
  - Rangari Road
  - WHC private haul road
- Road Transport Assessment to assess potential impacts to road network.



# Environmental Assessment Update



- State Significant Development assessment process





# Environmental Impact Statement



- Environmental Impact Statement currently being prepared.
- Anticipate EIS lodgement mid 2016.

Specialist Assessments	
Groundwater Assessment	Road Transport Assessment
Surface Water Assessment	Socio-economic Assessment
Flooding Assessment	Historic Heritage Assessment
Noise and Blasting Assessment	Visual Assessment
Air Quality and GHG Assessment	Geochemistry Assessment
Biodiversity Assessment	Environmental Risk Assessment
Aboriginal Cultural Heritage Assessment	Preliminary Hazard Analysis
Agricultural Impact Statement	Land Contamination Assessment

# Community Consultation

- CCC meeting 11 April 2016.
- Project newsletter to be distributed.
- Community information session and second CCC meeting to be held late May.
- One-on-one meetings with neighbours.
- Engagement with local councils.



## COMMUNITY NEWSLETTER



VICKERY EXTENSION PROJECT

APRIL 2016

### FROM THE PROJECT MANAGER

The Vickery Coal Project, owned by Whitehaven Coal, is an approved, but yet to be developed open cut coal mining operation, located approximately 25 km northwest of Gunnedah.

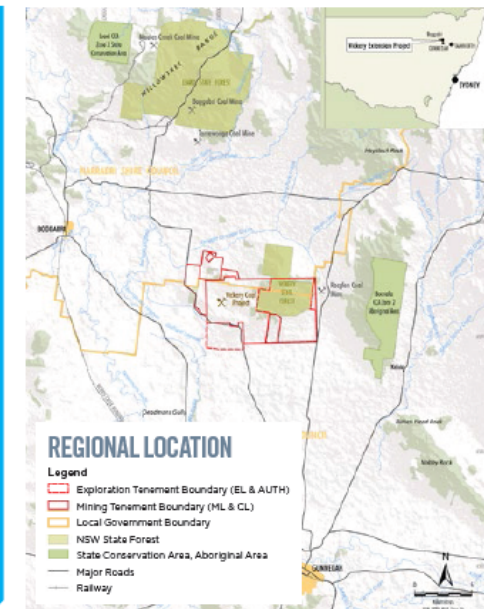
Whitehaven is seeking a new Development Consent for extension of open cut mining operations at the Vickery Coal Project.

It is estimated that a construction workforce of approximately 500 personnel and a full-time operational workforce of approximately 450 would be required for the Project.

Over the next 6 to 12 months Whitehaven Coal will be issuing regular newsletters updating the community about the Vickery Extension Project.

The newsletters will provide updates on the Project and key findings of the studies. Contact details are provided in this newsletter for anyone seeking additional information or wishing to discuss the proposed Project further.

Regards,  
Brian Cole  
Executive General Manager, Project Delivery



Source: LPMA - Topographic Base (2010); NSW Department of Industry (2015)

## OVERVIEW OF THE PROPOSED VICKERY EXTENSION PROJECT

The main components of the proposed Vickery Extension Project would include:

- Use of conventional mining equipment, haul trucks and excavators to remove waste rock and coal.
- Open cut mining extracting coal at a rate up to 10 million tonnes per annum for a period of approximately 30 years.
- Production of approximately 186 million tonnes of coal over the life of the mine.
- Development of external waste rock emplacements to the west and east of the Vickery Open Cut.
- Construction and operation of mine infrastructure areas including workshops, offices, an on-site CHPP and a train load out facility.
- Processing of up to approximately 13 million tonnes per annum of run-of-mine coal in the Project CHPP from the combined sources of the Project, Tarawonga and Rodgen Coal Mines.
- Construction and operation of a Project rail loop and rail spur (including associated local road level crossings) to connect to the Werris Creek Mungindi Railway.
- Realignment of sections of Blue Vale Road and Shannon Harbour Road closure of part of Braymont Road.
- Construction and use of dams, channels, dewatering bores and other control measures to manage groundwater and surface water within and around the mine site.
- Construction and operation of ancillary infrastructure in support of mining including haul roads, electricity supply, consumable storage areas, light vehicle roads and access tracks.

For more information on Whitehaven Coal, please visit our website.

[WHITEHAVENCOAL.COM.AU](http://WHITEHAVENCOAL.COM.AU)

# Community Consultation



- General business.
- Date and agenda for next meeting.
- Questions?



**Thankyou for your attendance**